

Fraser Coast Museums Trail



Discovering the past at the Portside Centre



BROOWEENA HISTORICAL VILLAGE AND MUSEUM

This charming historical village at Brooweena has an extensive array of memorabilia, equipment and musical instruments and aboriginal rock carvings, housed in a collection of 12 heritage buildings in a tranquil bush setting.

The complex includes blacksmith and butcher shops and an authentic rustic barn with a collection of bullock and horse drawn vehicles. There is an original settler's slab dwelling with detached kitchen, dairy shed, an old railway goods shed, railway station and old carriage, along with a school and church display.

Brooweena is 50 kilometres west of Maryborough. Ph: (07) 4129 9262
Open on the second Sunday of the month from 10am – 3pm (other times by prior arrangement).

MT BAUPLE AND DISTRICT HISTORICAL SOCIETY CULTURAL CENTRE AND MUSEUM

Reflecting the early history of the Tiaro area, the museum is set within extensive gardens. It houses a treasure trove of memorabilia including old photographs, family histories,

war records, a rare coin collection and an extensive display of telephones, antiques and collectables dating back more than a century. Of special interest is a crocodile skin from a large reptile shot in the Mary River near Owanyilla in 1964 and a 1907 locomotive. The gardens have free BBQs and picnic tables.

Bauple Drive, Bauple.
Phone: (07) 4193 9341
Open 9am – 4pm daily.
Closed Good Friday and Christmas Day.

Hervey Bay

HERVEY BAY HISTORICAL VILLAGE AND MUSEUM

This award winning tourism complex has 19 original buildings spread across three grassy acres, including a faithfully furnished slab hut from 1898, a complete railway station, an old church, a fully equipped blacksmith shop and a dairy shed.

In all, the museum houses a collection of more than 8,000 historical items—including authentic furnishings, household items and clothing, the wagons of early settlers and machinery used in Hervey Bay's sugar cane industry.

Blacksmith, woodturning and rope-making demonstrations are held every Sunday from 1pm–3pm, and can also be organised at other times by appointment for large groups.

13 Zephyr Street, Hervey Bay.
Ph: (07) 4128 4804. Open Friday and Saturday 1pm – 5pm (closes 4.30pm in winter) and during public holidays and school holidays. Open from 10.30am on Sundays.

Howard

BURRUM DISTRICT MUSEUM

The Burrum District Museum at Howard reflects the area's past as a major coal mining centre dating back to 1863, when the first seam of coal was discovered on the banks of the Burrum River. Mining of the area spanned over 130 years until the closure of the last coalmine (Burgowan Number 12) in 1997. The museum also features displays of local history from Howard and Torbanlea, early farming, war memorabilia and cottage crafts.

Burrum Street, Howard.
Ph: (07) 4129 0677 Open Tuesday and Wednesday 9am – 12pm. First Saturday of each month from 8am – 12pm.

BROOKLYN HOUSE

Visit the childhood home of Dame Annabelle Rankin, Queensland's first female senator. Brooklyn House (1890) has been lovingly restored and reflects the best of a bygone era.

23 William Street, Howard.

Ph: (07) 4129 4943. Open Thursday to Sunday, 10am – 3pm (except school and public holidays). Entry fee applies.

Maryborough

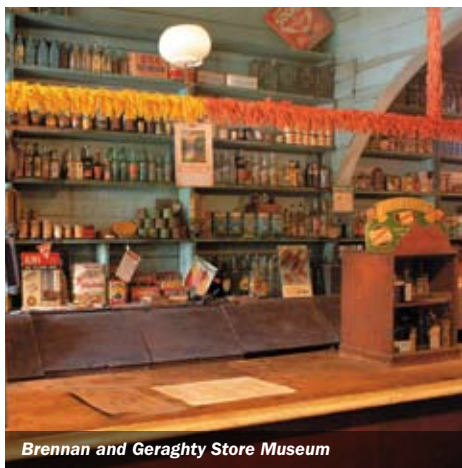
BRENNAN AND GERAGHTY STORE MUSEUM

Brennan and Geraghty Store Museum is the store that time forgot. The store opened in 1871 and ceased trading in 1972 complete with trading records and stock dating back to the 1890s.

The old grocery store is one of only three museum stores in the world where the contents have been preserved in original condition. The collection contains more than 100,000 relics such as rusty tins of World War II Lucky Hit tobacco and long-forgotten Australian brands like Brasso and Chief floor polish.

64 Lennox Street, Maryborough.

Ph. (07) 4121 2250. Open 10am – 3pm daily.



Brennan and Geraghty Store Museum

CROYDON FOUNDRY MUSEUM

The Croydon Foundry Museum is a valuable piece of Maryborough's history that gives an insight into one of the city's major industries during the last century.

The foundry was established by English immigrant William Stevenson in 1908 and operated in Maryborough until 1968. It produced the popular Croydon fuel stoves and boiler stands along with agricultural, mining and timber milling machinery and equipment for Queensland's sugar mills.

The complex also houses Bottlebrush Crafts whose members paint china, make bobbin lace, pottery, cloth dolls, scrapbook and spin and weave. Crafts are on sale.

30 Ferry Street, Maryborough.

Ph: (07) 4122 2533. Open Wednesday to Friday 10am – 2pm and Saturday 9am – 1pm. Free entry.

MARYBOROUGH HERITAGE CENTRE

On the ground floor of the historic Bank of New South Wales building, the Maryborough Family Heritage Institute holds one of the largest collections of genealogy records in Queensland, covering the immigrant passengers into Queensland and cemetery and burial records.

Maryborough Family Heritage Institute

Cnr Wharf and Richmond Streets, Maryborough. Ph: (07) 4123 1620. Open Monday to Friday from 9am – 4pm; Saturday afternoon 1 – 4pm and Thursday evening by appointment.

Located on the top floor of the Maryborough Heritage Centre, the Maryborough District Family History Society provides vital research resources for anyone interested in genealogy and heritage. It has an extensive library of records, historical books, articles, photographs, CD-ROM, microfiche and publications.

Maryborough District Family History Society

Ph: (07) 4123 1842. Open Tuesday, Wednesday, Thursday 9am – 3pm and Saturday 1 – 4pm (other times by appointment).

MARYBOROUGH MILITARY MUSEUM

Maryborough Military and Colonial Museum is regarded as one of the best community museums in Australia, with over 3000 items of military and colonial memorabilia.

Located in a beautifully restored heritage-listed building in the heart of Portside, it has an extensive navy, army and air force display, including three Victoria Crosses and a Cross of Valour.

It also has uniforms, historic vehicles and scale models, murals, wood sculptures and a 2000 book research library.

106 Wharf Street, Maryborough.

Open daily 9am – 3pm. Ph: (07) 4123 5900 www.maryboroughmuseum.org

MARYBOROUGH PORTSIDE CENTRE AND BOND STORE MUSEUM

Housed in the former Customs House (c.1901), the Portside Centre celebrates the region's early history with interactive displays including listening posts with first settler stories, time capsules and multimedia displays.

The neighbouring Bond Store managed the thriving import, export and liquor trade of the era and the museum documents the history of the Port of Maryborough. Experienced guides and scores of publications at both centres help give people insight into the region and the city's colourful origins.

Wharf Street, Maryborough.

Ph: (07) 41 905 730. Open 10am – 4pm daily. Public holidays 10am – 1pm.



Stories of Immigrants at the Portside Centre



Tour and accommodation bookings
Local advice, information and maps
Souvenirs, gifts and books
Warm welcome

Hervey Bay Airport

Don Adams Drive
ph (07) 4197 4730
OPEN Mon–Fri 8am–4pm
Sat & Sun 8am–3pm

Maryborough

City Hall, Kent Street
ph 1800 214 789
OPEN Mon–Fri 9am–5pm
Sat & Sun 9am–3pm

Hervey Bay

227 Maryborough-Hervey Bay Road
ph 1800 811 728
OPEN daily 9am–5pm

Tiaro

Mayne Street
ph (07) 4129 2599
OPEN daily 9am–4.30pm

ORIGINAL MARYBOROUGH SITE

Tour the Original Maryborough Site—one of the few original township sites in Australia left intact. Pioneer graves help create a lingering sense of history at the old township, which was settled in 1847, and was originally known as Wide Bay Village. It was abandoned in 1855 when its residents voted to relocate to where Maryborough's city centre and port area is located.

**Aldridge Street (off Alice Street)
Maryborough.**

MARYBOROUGH WIDE BAY BURNETT HISTORICAL SOCIETY

Located in the School of Arts, one of Maryborough's most beautiful heritage buildings, the Maryborough Wide Bay Burnett Historical Society offers a wonderful snapshot of early history through a collection of more than 3500 photographs.

The collection also includes historical records, over 3000 books, wedding gowns from 1890–1910, needlework and lace artefacts.

**Kent Street, opp. City Hall.
Ph: (07) 4121 6646. Open Wednesday and Friday 9am – 12pm, Thurs 9am – 1pm.**

MARYBOROUGH WHISTLE STOP MUSEUM

Maryborough's impressive rail heritage is on show at the Whistle Stop Museum located on the site of the heritage-listed railway station (c. 1882). The museum contains a small but remarkable collection of railway memorabilia.

The museum's dedicated team of volunteers also crews the *Mary Ann*, a working replica of Queensland's first steam engine built in Maryborough in 1873. *Mary Ann* runs through Queens Park every Thursday and last Sunday of the month.

**Railway Station, Lennox Street.
Ph: (07) 4121 0444. Open Thursday and last Sunday of the month.**

Historic homes & collections**BEARS, DOLLS AND GOLLIE TOO**

Housed in a historical 1915 cottage, this vast collection of memorabilia, consisting of dolls, teddies, gollies, tin toys, trains and much more, is intended to bring back fond memories. Share the atmosphere, then relax and take in the pleasant surroundings of Lilly Pilly Cottage and its gardens.

**Lilly Pilly Cottage, 15 Scott Street,
Maryborough. Ph: (07) 4121 6646 or
Mob: 0438 105 589. Open Monday to Friday,
9.30am – 4pm (weekends by appointment).
Entry fee applies.**

GRAND SHIRL'S DOLL AND TOY MUSEUM

Take a step back in time and see beautiful antique dolls and old toys including a rare Holden Pedal Car made in 1944 and clockwork dating back to 1824. The museum is housed in a special cottage.

**123 Walker Street, Maryborough.
Ph: (07) 4121 2051. Open Thursday to
Sunday, 9.30am – 4pm (or by appointment).
Entry fee applies.**

MAVIS BANK

Mavis Bank (formerly Ormond), built in 1874 by the family of prominent settler James Cleary, consists of eleven rooms completely furnished as a Maryborough home of the period 1890–1940. Owners Liz and Patrick Mackenzie live among these extraordinary antiques and collectables—continually adding to and improving their collection.

Period pictures line the walls and clothes from 1890–1940 fill wardrobes and blouse chests. At night the home is lit by kerosene lamps and filled with music from antique gramophones.

**256 Queen Street, Maryborough.
Ph: (07) 4123 5497. Open 7 days 1pm – 4pm
(morning and afternoon tea available for
buses and groups only. Pre-booking is
essential). Entry fee applies.**

ST MARY'S CATHOLIC CHURCH

The heritage room of St Mary's offers an insight into the early history of the Catholic Church in the region. The first Mass was said in Maryborough in 1852. This heritage listed church (c. 1872) replaced an earlier wooden church built in 1858 which was also used for the town's first school.

**269 Adelaide Street, Maryborough. Heritage
Room open Thursdays 10am – 11.45am.
Enter from opposite Post Office. Free entry.**

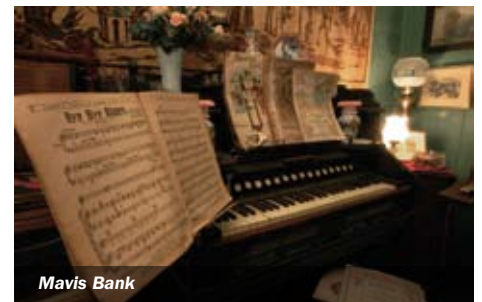
WIDE BAY HOSPITALS MUSEUM SOCIETY

This museum displays items and documents from the Maryborough Public Hospital, which opened in 1854 as Queensland's first hospital outside of Brisbane. It contains admission and birth registers and 19th century nursing books.

Learn details of Australia's first and only recorded outbreak of Pneumonic Plague or the Black Plague, which occurred in Maryborough in 1905, killing eight people including two nurses.

Some displays from the Hospital Museum are also on show at the Maryborough Heritage Centre in Wharf Street.

**199 Neptune Street, Maryborough.
Open third Thursday of the month
9.30am – 1pm. Entry by gold coin donation.**



Mavis Bank

For more information, contact a Fraser Coast Visitor Information Centre or go to www.ourfrasercoast.com.au



Tour and accommodation bookings
Local advice, information and maps
Souvenirs, gifts and books
Warm welcome

Hervey Bay Airport

Don Adams Drive
ph (07) 4197 4730
OPEN Mon–Fri 8am–4pm
Sat & Sun 8am–3pm

Hervey Bay

227 Maryborough-Hervey Bay Road
ph 1800 811 728
OPEN daily 9am–5pm

Maryborough

City Hall, Kent Street
ph 1800 214 789
OPEN Mon–Fri 9am–5pm
Sat & Sun 9am–3pm

Tiaro

Mayne Street
ph (07) 4129 2599
OPEN daily 9am–4.30pm